

JUNG PUMPEN

PIPE WORK AND ACCESSORIES

FOR SUMPS PROVIDED BY THE CUSTOMER

APPLICATION

During the construction of pumping stations, the use of complete pipe work makes the installation process easier.

These kits are made up of optimally matched components of stainless steel, combined with grey cast iron fittings, and they dispense with the need for the complicated assembly of individual components.

In the event that the pipe work in the sump needs to be replaced due to corrosion damage or because a new pump makes this necessary, complete pipe work is extremely convenient.

SCOPE OF SUPPLY

Pipe work sealed at the sump wall with a puddle flange

Guide rail system including claw and pipe support (accessory in the case of DN 40), elbow ball check valve KE 40 or swing-type check valve R 80, R 100 and R 150 G, stop valve in corresponding nominal size. Duplex units DN 80 in sumps \varnothing 1000 without stop valve (sluice valve and set of earth installation equipment, see accessories). Stainless steel pressure pipe, discharge branch DN 40 with 1 1/2" thread, loose flange for DN 80/100/150 (stainless steel), screws, nuts, seals and fixing materials. Guide rails, see accessories.

Pipe work sealed at the sump wall with ring seal provided by the customer

Guide rail system including catch and pipe support (accessory in the case of DN 40), elbow ball check valve KE 40 or swing-type check valve R 80, R 100 and R 150 G, stop valve in corresponding nominal size. Duplex units DN 80 in sumps \varnothing 1000 without stop valve (sluice valve and set of earth installation equipment, see accessories). Pipe work stainless steel, discharge branch DN 40 with 1 1/2" thread. In the case of sumps \varnothing 1500 and \varnothing 2000 with pipe work DN 80/100/150 the discharge branch ends with a loose flange in the sump. The connection to the pipe work is made in the pump chamber. Screws, nuts, seals and fixing materials. Guide rails, see accessories.



DN 50

DN 80
(Illustration without guide rails)

- Optimally matched components
- Fits in any type of sump
- Pipe made of stainless steel
- Discharge branch with selectable seal in the sump wall

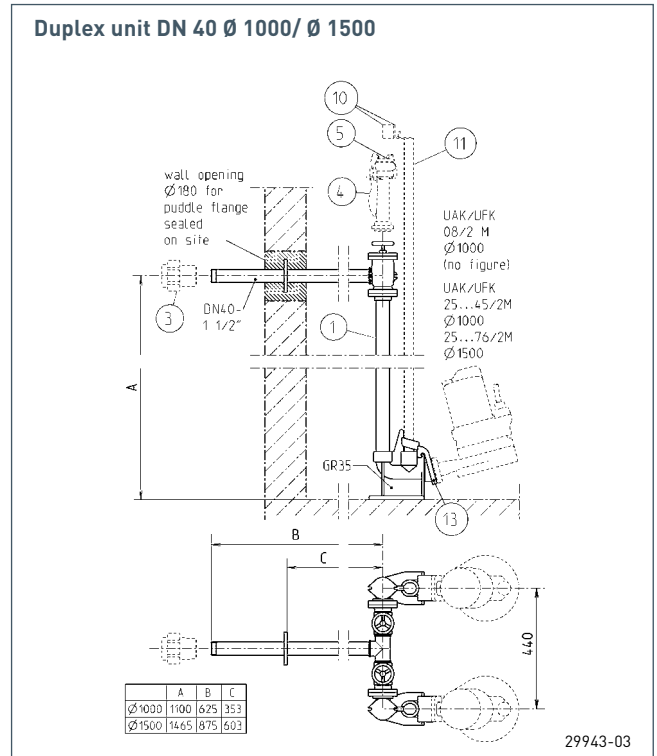
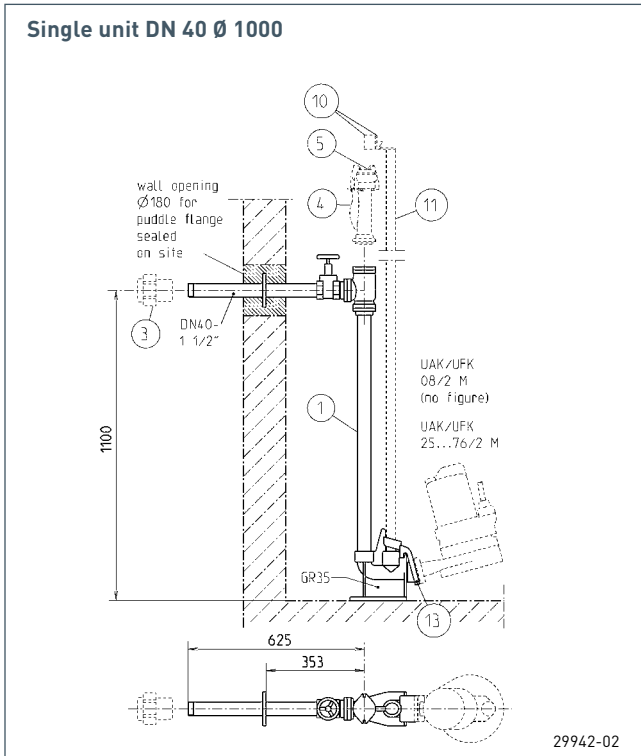
JUNG PUMPEN

PIPE WORK AND ACCESSORIES

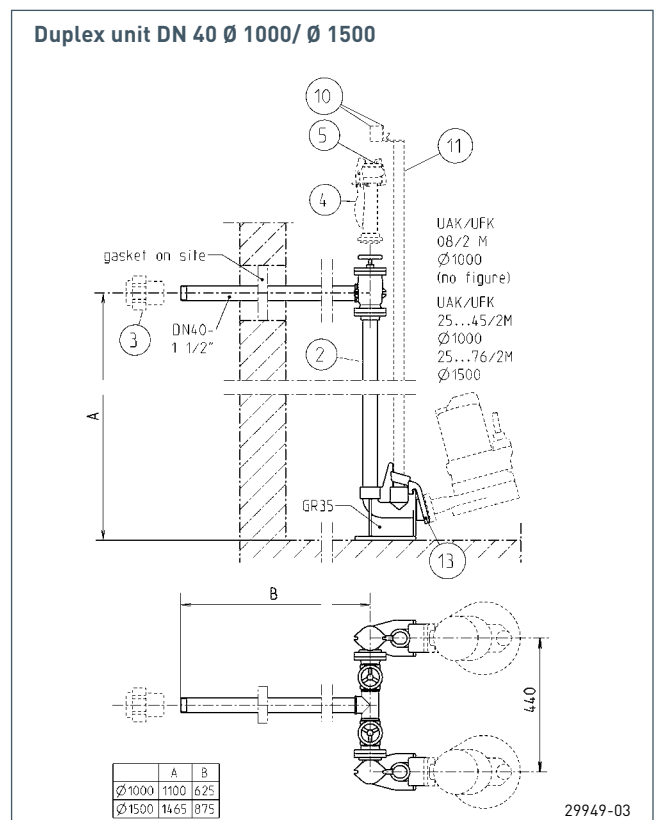
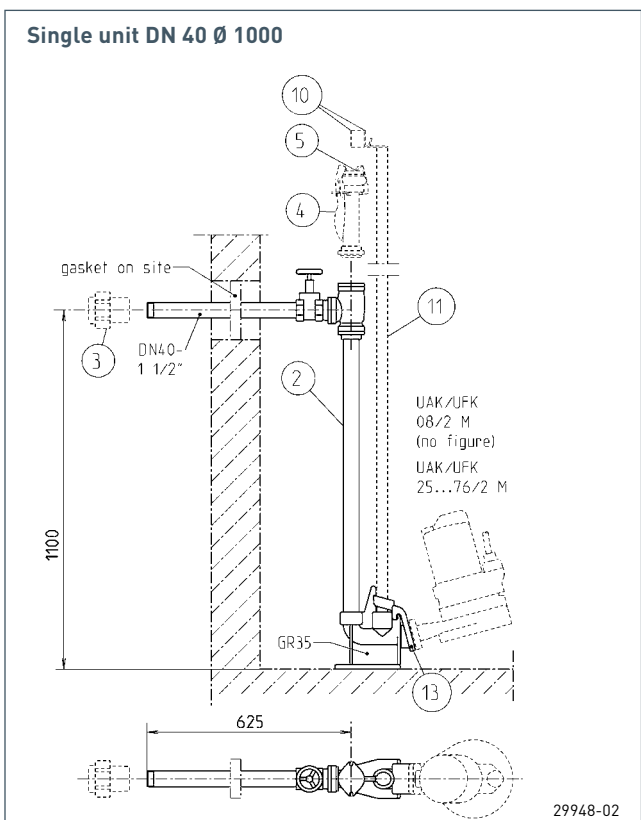
FOR MULTICUT SUBMERSIBLE SEWAGE PUMPS

FOR SUMPS PROVIDED BY THE CUSTOMER Ø 1000 AND Ø 1500

Pipe work, complete components with puddle flange for bricking in



Pipe work, complete components, wall duct and ring seal to be provided by the customer



JUNG PUMPEN

PIPE WORK AND ACCESSORIES

FOR MULTICUT SUBMERSIBLE SEWAGE PUMPS

Description	Code No.	Weight kg	Sump diameter	
			min. Ø 1000	min. Ø 1500
① Pipe work, stainless steel, complete components, with puddle flange for bricking in				
Single unit Ø 1000-40 DN 40	JP28418	33	•	
Duplex unit Ø 1000-D 40 DN 40	JP28420	65	•	
Duplex unit Ø 1500-D 40 DN 40	JP28434	69		•
② Pipe work, stainless steel, complete components, for ring seal to be provided by customer				
Single unit Ø 1000-40 DN 40	JP29912	33	•	
Duplex unit Ø 1000-D 40 DN 40	JP29914	65	•	
Duplex unit Ø 1500-D 40 DN 40	JP40001	69		•
③ Single ended quick release coupling				
1 1/2" Ø 50 mm (DN 40) DN 40	JP22366		•	•
1 1/2" Ø 63 mm (DN 50) DN 40	JP22367		•	•
④ Perrot flushing connection 250 mm lg galvanised steel				
1 1/2" JP23097			•	•
Fire hose coupling C (DIN JP 14307)				
1 1/2" JP23717			•	•
⑤ Accessories for Perrot flushing connection	JP19202		•	•
DRS connection	JP22421		•	•
Breathing valve	JP22422		•	•
Pressure gauge	JP24666		•	•
Claw coupling	JP22420		•	•
Flush connector 1" outside	JP22466		•	•
⑩ Tie-bar for guide rail support (including guide rail support)				
Single unit stainless steel	JP25496		•	
Duplex unit stainless steel	JP25497		•	
Duplex unit stainless steel	JP25500			•
⑪ Guide tube stainless steel				
per 1,0 m (Only in conjunction with a pressure pipe installation kit)	JP28346		•	•
⑫ Access aid (without illustration)				
Grab handle, stainless steel	JP27830		•	
Sleeve, stainless steel	JP27832		•	
⑬ Coupling claw with seal GR 35, MultiCut 08	JP44758		•	

Guide rail lengths for sump min. Ø 1000

Chamber depth in m	2.1*	2.6	3.1	3.6	4.1	4.6	5.1	5.6	6.1
Necessary guide tube length in m	1.0	1.6	2.1	2.6	3.1	3.6	4.1	4.6	5.1

Guide rail for single unit order 1x, for duplex unit order 2x

Guide rail lengths for sump min. Ø 1500

Chamber depth in m	2.7*	2.7	3.2	3.7	4.2	4.7	5.2	5.7	6.2	6.7
Necessary guide tube length in m	1.5	1.9	2.4	2.9	3.4	3.9	4.4	4.9	5.4	5.9

Guide rail for single unit order 1x, for duplex unit order 2x

* No tie-bar necessary

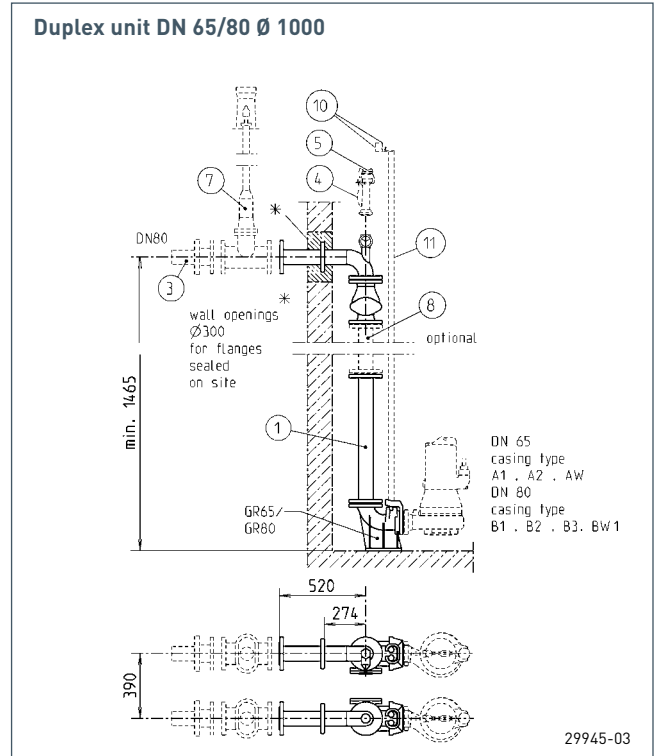
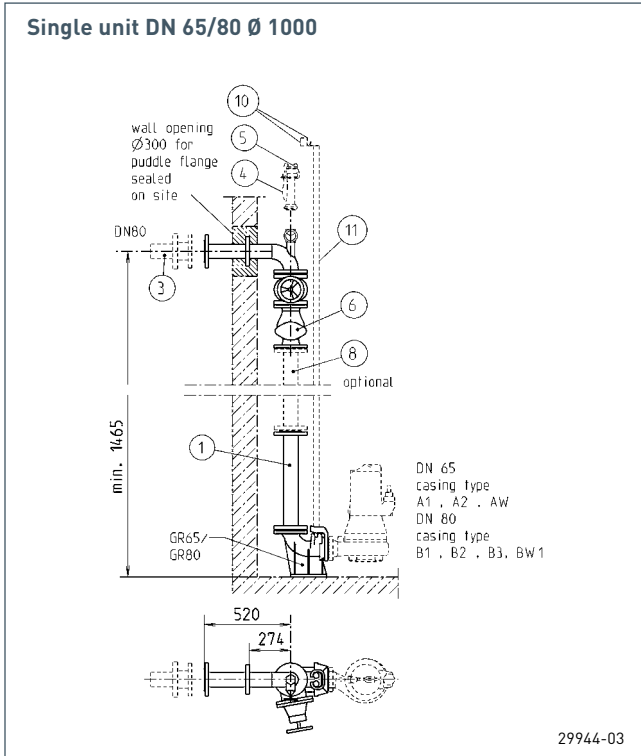
JUNG PUMPEN

PIPE WORK AND ACCESSORIES

FOR MULTISTREAM/MULTIFREE SUBMERSIBLE SEWAGE PUMPS

FOR SUMPS PROVIDED BY THE CUSTOMER Ø 1000

Pipe work, complete components with puddle flange for bricking in



JUNG PUMPEN

PIPE WORK AND ACCESSORIES

FOR MULTISTREAM/MULTIFREE SUBMERSIBLE SEWAGE PUMPS

Description	Code No.	Weight kg	Sump diameter min. Ø 1000
1 Pipe work, stainless steel, complete components, with puddle flange for bricking in			
Single unit Ø 1000 DN 65/80	JP29350	95	•
Duplex unit Ø 1000 DN 65/80	JP29352	150	•
Single unit Ø 1000 DN 80	JP29351	95	•
Duplex unit Ø 1000 DN 80	JP29353	150	•
3 Flange adaptor			
DN 80	JP30062	7	•
Pipe connector (for spigot)	DN 80 JP30065	7	•
Inner support sleeve (necessary for PE pipe)	DN 80 JP30096		•
4 Perrot flushing connection 250 mm lg galvanised steel			
1 1/2"	JP22353		•
Fire hose coupling C (DIN 14307)	1 1/2" JP44770		•
5 Accessories for Perrot flushing connection			
Hose coupling	JP19202		•
DRS connection	JP22421		•
Breathing valve	JP22422		•
Pressure gauge	JP44854		•
Claw coupling	JP22420		•
Flush connector 1" outside	JP22466		•
6 Additional price for swing-type check valve R 80 G*			
(with lever and weight)	DN 80 JP09589		•
Additional price for ball check valve K 80**	DN 80 JP40017		•
7 Sluice valve for duplex unit**			
Set of earth installation equipment	DN 80 JP18936		•
with street cap DN 80**			
Pipe cover 700 mm	JP18938		•
Pipe cover 1000-1400 mm	JP18939		•
Pipe cover 1250-1800 mm	JP18940		•
8 Pipe work extension for single unit, stainless steel (additional price)			
DN 80 500 mm lg	JP29460	16	•
DN 80 1000 mm lg	JP29461	22	•
DN 80 2000 mm lg	JP29462	34	•
Pipe work extension for duplex unit, stainless steel (additional price)			
DN 80 500 mm lg stainless steel	JP29463	32	•
DN 80 1000 mm lg stainless steel	JP29464	44	•
DN 80 2000 mm lg stainless steel	JP29465	68	•
10 Tie-bar for guide rail support (890 mm long) stainless steel JP40082			
11 Guide rail, stainless steel per 1,0 m 1" JP28346			
(Only in conjunction with a pressure pipe installation kit)	1"		•
12 Access aid (without illustration)			
Grab handle, stainless steel	JP27830		•
Sleeve, stainless steel	JP27832		•

Guide rail lengths for sump min. Ø 1000

Chamber depth in m	2.6	3.1	3.6	4.1	4.6	5.1	5.6	6.1
Necessary guide tube length in m	1.5	2.0	2.5	3.0	3.5	4.0	4.5	5.0

Guide rail for single unit order 2x, for duplex units order 4x

* Only for single unit ** If duplex unit order 2x

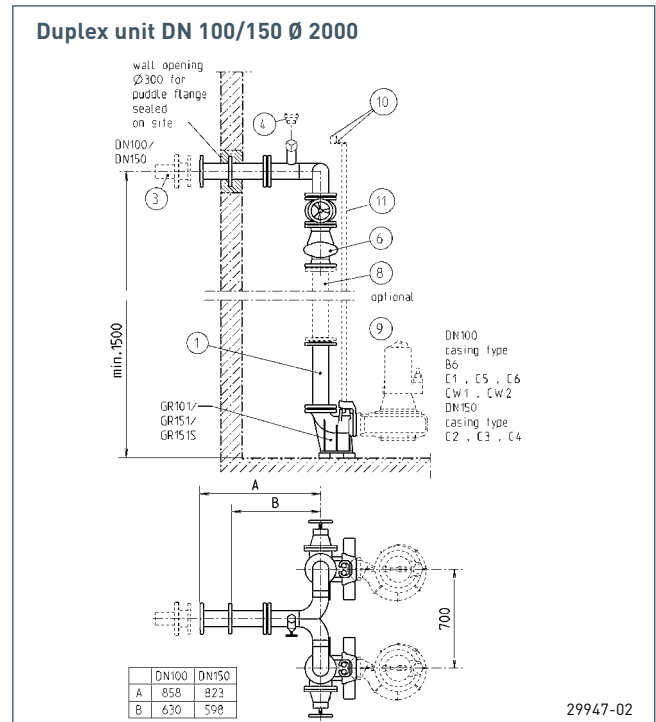
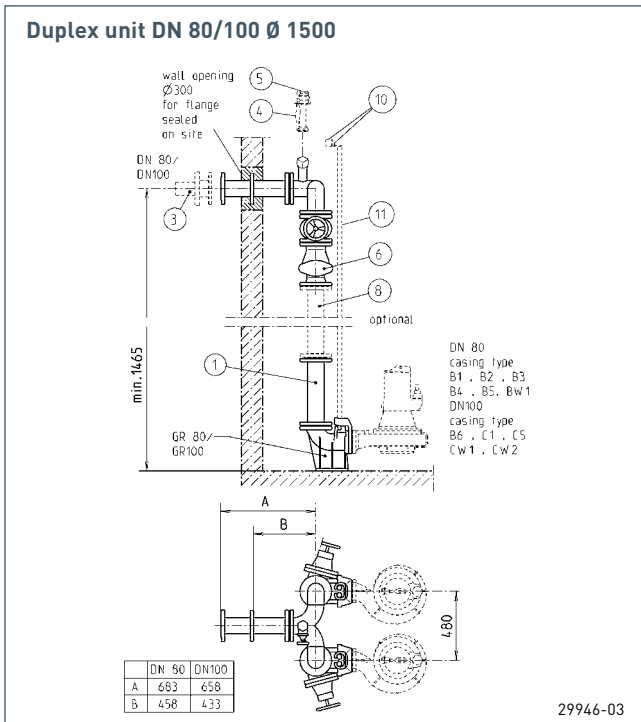
JUNG PUMPEN

PIPE WORK AND ACCESSORIES

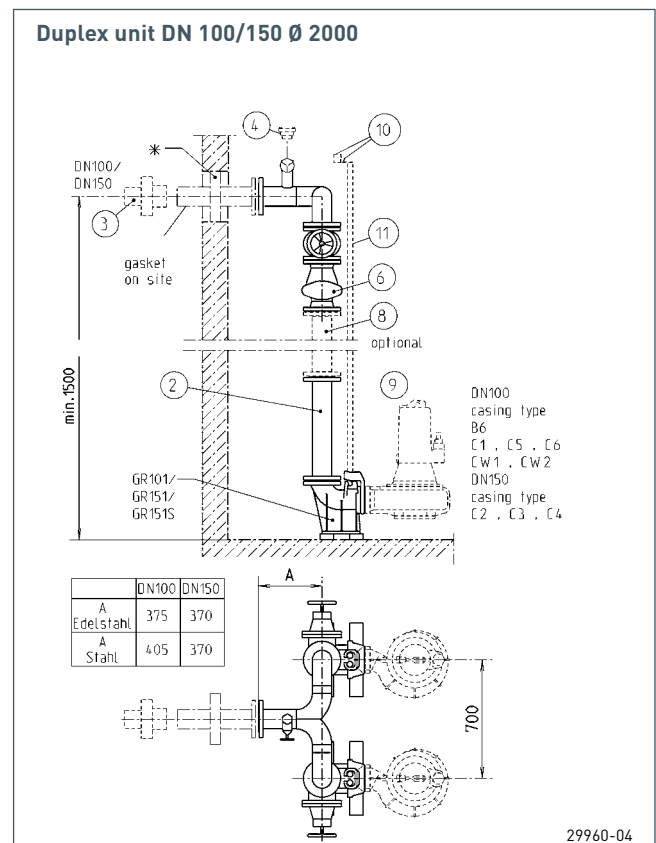
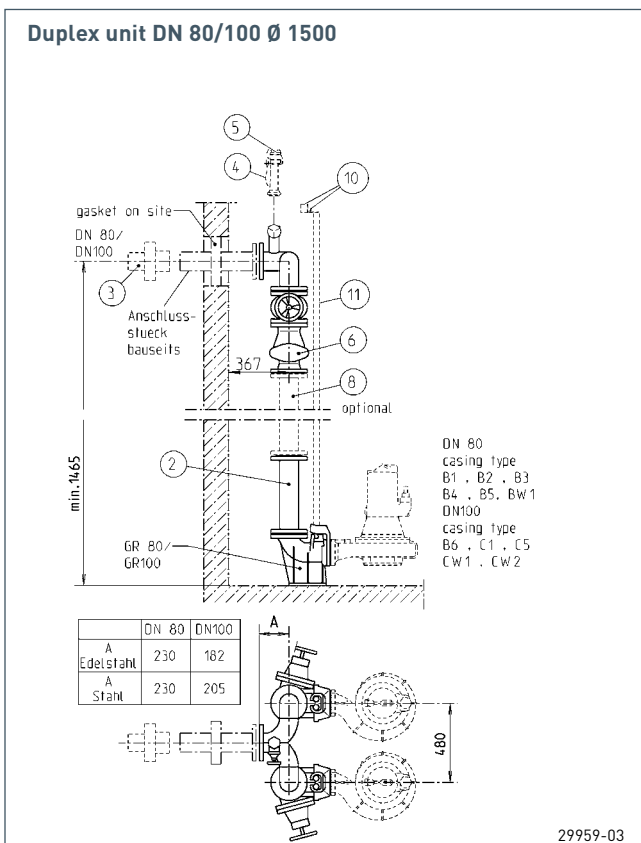
FOR MULTISTREAM/MULTIFREE SUBMERSIBLE SEWAGE PUMPS

FOR SUMPS PROVIDED BY THE CUSTOMER Ø 1500 AND Ø 2000

Pipe work, complete components with puddle flange for bricking in



Pipe work, complete components, wall duct and ring seal to be provided by the customer



JUNG PUMPEN

PIPE WORK AND ACCESSORIES

FOR MULTISTREAM/MULTIFREE

Description	Code No	Weight kg	Sump diameter	
			min. Ø 1500	min. Ø 2000
1 Pipe work, stainless steel, complete components, with puddle flange for bricking in				
Duplex unit Ø 1500 DN 80	JP29354	202	•	
Duplex unit Ø 1500 DN 100	JP29355	262	•	
Duplex unit Ø 2000 DN 100	JP29406	285		•
Duplex unit Ø 2000 DN 150	JP29407	561		•
2 Pipe work, stainless steel, complete components, ring seal to be provided by customer				
Duplex unit Ø 1500 DN 80	JP29932	190	•	
Duplex unit Ø 1500 DN 100	JP29934	246	•	
Duplex unit Ø 2000 DN 100	JP29936	269		•
Duplex unit Ø 2000 DN 150	JP29938	536		•
3 Flange adaptor				
	DN 80	JP30062	•	
	DN 100	JP30063	•	•
	DN 150	JP30064		•
Pipe connector (for spigot)	DN 80	JP30065	•	
	DN 100	JP45926	•	•
	DN 150	JP45927		•
Inner support sleeve (necessary for PE pipe)	DN 80	JP30096	•	
	DN 100	JP30097	•	•
	DN 150	JP30098		•
4 Perrot flushing connection 250 mm lg galvanised steel	1 ½"	JP22353	•	
Fire hose coupling C (DIN 14307)	1 ½"	JP44770	•	
Fire hose coupling C (DIN 14307)	2"	JP44853	•	•
5 Accessories for Perrot flushing connection				
Hose coupling		JP19202	•	
DRS connection		JP22421	•	
Breathing valve		JP22422	•	
Pressure gauge		JP44854	•	
Claw coupling		JP22420	•	
Flush connector 1" outside		JP22466	•	
6 Add. price for swing-type check valve (with lever and weight)	R 80 G* DN 80	JP09589	•	
	R 100 G* DN 100	JP09590	•	•
Additional price for ball check valve	K 80** DN 80	JP40017	•	
8 Pipe work extensions, stainless steel, (additional price)				
DN 80 500 mm lg		JP29463	32	•
DN 80 1000 mm lg		JP29464	44	•
DN 80 2000 mm lg		JP29465	68	•
DN 100 500 mm lg		JP29469	38	•
DN 100 1000 mm lg		JP29470	52	•
DN 100 2000 mm lg		JP29471	82	•
DN 150 500 mm lg		JP29475	60	•
DN 150 1000 mm lg		JP29476	84	•
DN 150 2000 mm lg		JP29477	136	•
9 2 safety levers for C2 pumps, stainless steel		JP22364		•
10 Tie-bar for guide rail support , stainless steel	1380 mm long	JP40083	5	•
	1850 mm long	JP40084	7	•
11 Guide rail , stainless steel	per 1.0 m	1"	JP28346	•
(Only in conjunction with a pressure pipe installation kit)	per 1.0 m	1½"	JP28348	•
12 Access aid double handle , stainless steel (without illustration)		JP28255	6	•

Guide rail lengths for sump min.Ø 1500

Chamber depth in m	2.7	3.2	3.7	4.2	4.7	5.2	5.7	6.2	6.7
Necessary guide rail length in m	1.5	2.0	2.5	3.0	3.5	4.0	4.5	5.0	5.5

Guide rails for duplex unit order 4x

* Per swing-type check valve ** If duplex unit order 2x

JUNG PUMPEN

PIPE WORK AND ACCESSORIES

FOR MULTISTREAM/MULTIFREE

ALLOCATION OF CHAMBER LADDERS

For sump diameters:

Ø 1500 with pipe work DN 40 and with access gate Ø 610, Ø 800

Ø 1500 with pipe work DN 80 or DN 100 and with access gate Ø 610, Ø 800, 1000 x 800

Ø 2000 with pipe work DN 100 or DN 150 with two access gates Ø 610, Ø 800, 1000 x 800

Chamber ladder B = 300 mm		Chamber installation depth [m]									stainless steel 1.4571
		2.7	3.2	3.7	4.2	4.7	5.2	5.7	6.2	6.7	
Ladder length	Rungs	Required number of ladders									Code No.
1,68 m	6			2x	1x						JP28245
1,96 m	7					1x	1x		3x	2x	JP28246
2,24 m	8	1x			1x	1x					JP28247
2,52 m	9							1x		1x	JP28248
2,80 m	10		1x				1x	1x			JP28249
Connectors		-	-	1x	1x	1x	1x	1x	2x	2x	JP28279

Attention: For sumps Ø 2000 with pipe work DN 100 or DN 150 and two access gates, order double the number of units!

Wall bracket		Chamber installation depth [m]									stainless steel 1.4571
		2.7	3.2	3.7	4.2	4.7	5.2	5.7	6.2	6.7	
Opening [mm]	Adjusting range	Required number of wall brackets									Code No.
Ø 610	360–410 mm	2x	3x	4x	4x	4x	5x	5x	6x	6x	JP28188
Ø 800	200–250 mm	2x	3x	4x	4x	4x	5x	5x	6x	6x	JP28186
1000 x 800	280–330 mm	2x	3x	4x	4x	4x	5x	5x	6x	6x	JP28187
Befestigungsmaterial für Wandhalter		Stückzahl analog zu den Wandhaltern									JP28278

Attention: For sumps Ø 2000 with pipe work DN 100 or DN 150 and two access gates, order double the number of units!